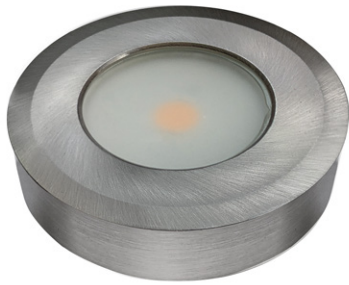


POWER LED DECK & STEP LIGHT

Low voltage LED puck light available in three finishes offers over high light output for step and deck applications.



Recessed



Scoop



Surface Mount

Features

- For indoor and outdoor use
- Single COB LED light engine options available in recessed or surface mount
- Excellent light output
- Reduce cost of inventory, parts stocked individually

Applications

Step | Deck | Landscape | Indoor | Outdoor

Installation

Surface mount or recess installation, $\varnothing 2\frac{1}{4}"$ (57mm) cutout



Voltage	12V DC		
Wattage	2W	3W	4W
# of LEDs	1 COB LED		
Color Temp	3000K	Dim to Warm (3000K dims to 1800K)	2700K / 3000K / 4000K / RGB (4 wire) / RGBW (5 wire) /
CRI	>90		
Lumens	200	298	320
Dimmable	Yes		
Housing	Aluminum		
Wire Length	20" (50cm)		
Lifespan	+60,000 hours		
Warranty	3-year		

Finishes Available



Brushed Nickel



Black



White

Dimensions

